

TC Impact Twin Setup

Some important one-time configuration settings need to be made to use the Impact Twin with Channel D Pure Vinyl. The steps are listed below.

Before beginning, download and install the latest drivers for the Impact Twin from the TC Electronic website, and restart the computer.

The drivers on the website will most likely be newer than the ones on the CD that came with the unit. Be sure to click the version for the Mac:

<http://www.tcelectronic.com/default.asp?id=14030&AjrDcmntId=6310>

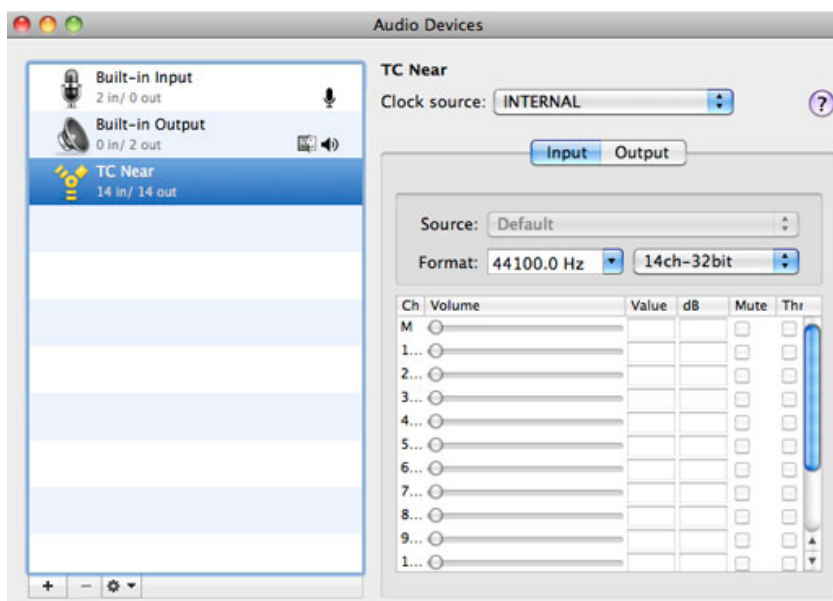
We are going to first set the sample rate to 44.1 kHz so we can make changes in the TC Near mixer, then adjust the faders in the TC Near mixer application, and then finally select the TC as the device to use in Pure Vinyl Recorder.

WARNING: Do not activate the 48 V switch on the front panel of the Impact Twin when your turntable / cartridge is connected. Severe damage to your phono cartridge may result.

1. First select the TC device in Apple's Audio MIDI Setup application, and set the sample rate to 44.1 kHz as shown below. Also, one at a time, select the Built-In Input and Built-In Output, and with the "gear" pop-up menu at the bottom of the window, assign the little "microphone" and "speaker" icons to the Built-in audio (Input / Output).

Very important: the little icons have to be to the right of the Built-in audio devices, as shown. (More set-up information can be found in the first section of the Pure Music User Guide included with Pure Vinyl.)

When you're finished, it should appear as it does below.



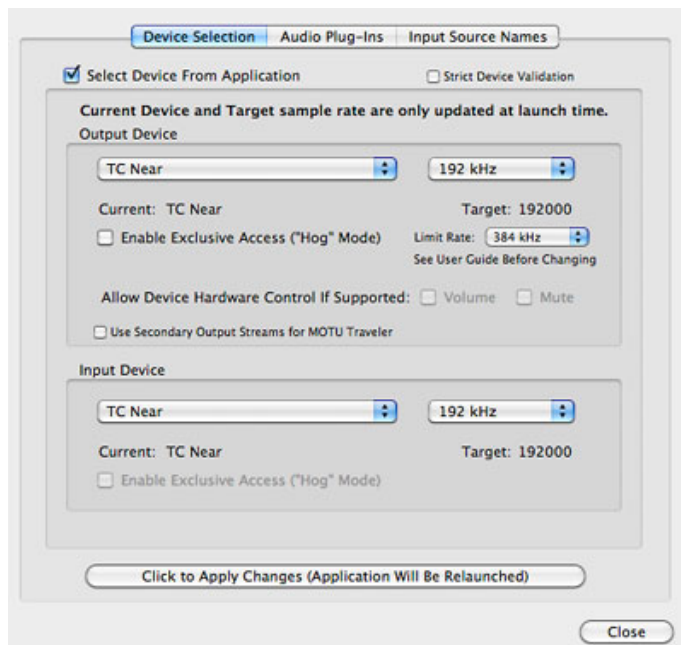
2. Next, in the TC Near Control Panel application, reduce the volume of the input faders (indicated) to zero (that is, minus infinity dB), otherwise the inputs will feed through to the outputs. (The default mixer settings are for a recording setup, which won't work).

The fader in the last column, on the right, needs to be set at maximum, as shown. This fader also is controlled by the Impact Twin's front panel volume control (the last knob on the right side of the unit's front panel).



3. Launch Pure Vinyl Recorder (Version 3). Open the Preferences and click the Advanced Audio Setup... button. The panel shown below will appear.

Click "Select Device From Application."



Select TC Near in the Output Device and Input Device pop-up menus. If TC Near doesn't appear in the Output Device and Input Device pop-up menus, uncheck the Strict Device Validation check box, and click the "Click to Apply Changes..." button. Pure Vinyl Recorder will then re-launch. Navigate to the Advanced Audio Setup... dialog box again, and configure it exactly as shown above, including setting the sample rate to 192 kHz. Don't touch the "Limit Rate" pop-up menu.

Finally, click the "Click to Apply Changes..." button.